

YEAR 2016

CORE STATION 5038

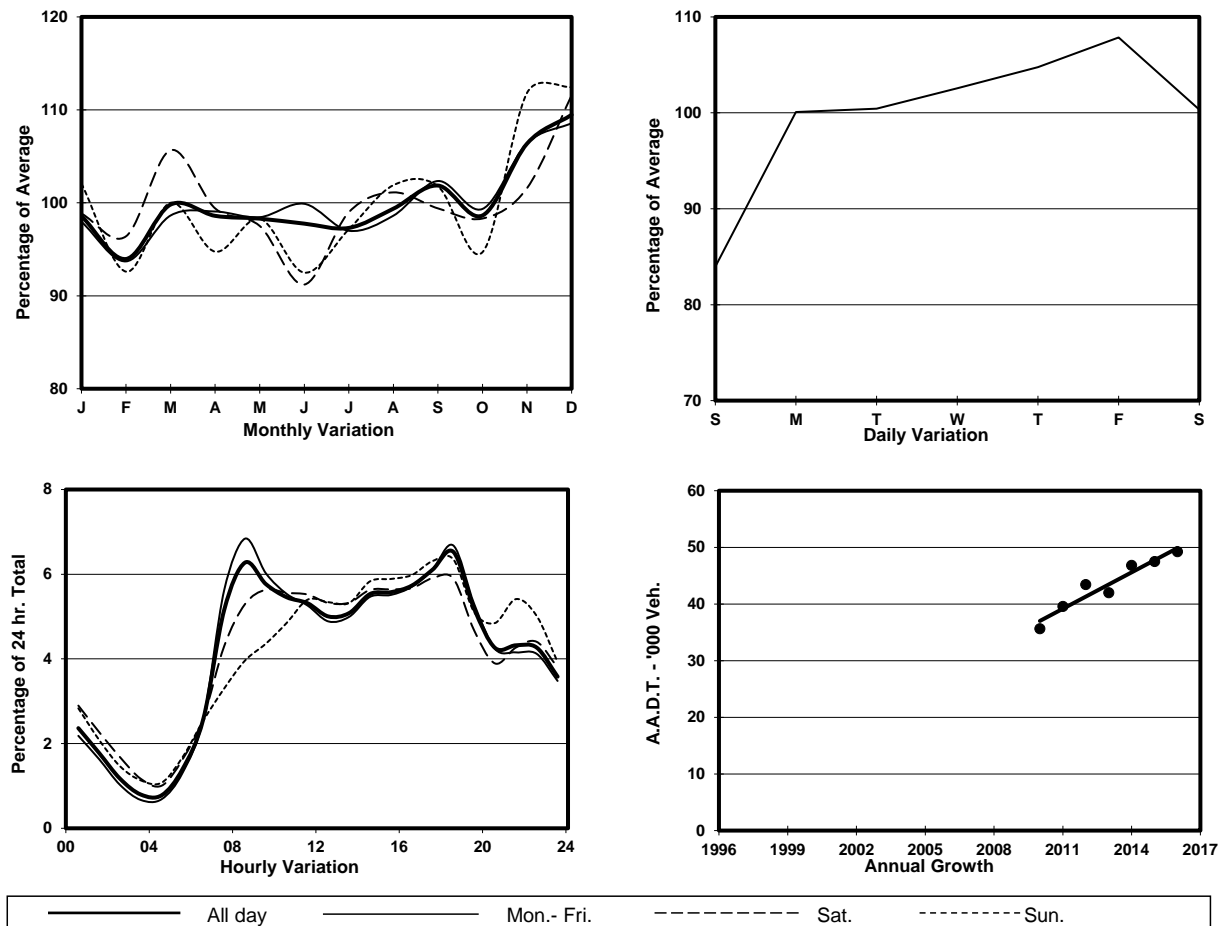
ROAD NETWORK MAJOR

ROAD TYPE EXPRESSWAY

LINK NAM WAN TUNNEL (from EAST TSING YI VIADUCT to CHEUNG TSING HIGHWAY)



1. TRAFFIC FLOW VARIATION AND GROWTH



2. TRAFFIC CHARACTERISTICS (BY DIRECTION)

Parameter	All - Day	Mon. - Fri.	Sat.	Sun.
EAST BOUND				
A.A.D.T.	26280	27210	26730	22820
R 12 / 24 - %	68.6	70	66.3	62.9
R 16 / 24 - %	85.4	86.1	83	83.7
AM Peak Hour	0800-0900	0800-0900	0900-1000	0900-1000
One-way flow at AM peak hour	1770	2010	1560	960
T - % (AM)	-	19.4	-	-
PM Peak Hour	1800-1900	1800-1900	1800-1900	1800-1900
One-way flow at PM peak hour	1750	1830	1650	1570
T - % (PM)	-	11.8	-	-
Prop.of commercial vehicles - 16 hr.	-	18.1	-	-
WEST BOUND				
A.A.D.T.	22930	24040	23090	18640
R 12 / 24 - %	66.3	67.1	65.1	62.8
R 16 / 24 - %	85.7	86.8	82.8	82.7
AM Peak Hour	0800-0900	0800-0900	0900-1000	0900-1000
One-way flow at AM peak hour	1320	1500	1250	850
T - % (AM)	-	25.3	-	-
PM Peak Hour	1800-1900	1800-1900	1700-1800	1700-1800
One-way flow at PM peak hour	1460	1590	1400	1140
T - % (PM)	-	21.2	-	-
Prop.of commercial vehicles - 16 hr.	-	23.7	-	-

3. OTHER INFORMATION AND COMMENT

4. Vehicle classification and occupancy - Monday to Friday

Time		Class of vehicle									
		Motor	Private	Taxi	Private	PLB	Goods veh.		Non	Fr. Bus	
		Cycle	Car		LB		Light	M & H	Fr. Bus	SD	DD
0700-0800	Pro	1.9	48.9	17.2	0.4	0.0	10.5	15.2	5.1	0.0	0.8
	Ocp	1.0	1.9	2.3	4.0	0.0	1.5	1.1	23.6	0.0	11.4
0800-0900 Peak hour	Pro	1.3	50.7	15.2	0.3	0.0	10.5	15.1	5.8	0.0	1.1
	Ocp	1.1	1.3	2.4	4.0	0.0	1.4	1.2	31.7	0.0	14.7
0900-1000	Pro	0.4	42.6	16.5	0.3	0.0	13.4	21.8	3.6	0.0	1.4
	Ocp	1.0	1.5	2.6	2.5	0.0	1.4	1.2	16.3	0.0	11.5
1000-1100	Pro	0.3	42.8	15.9	0.4	0.0	13.5	21.7	4.2	0.0	1.2
	Ocp	1.0	1.5	2.5	5.3	0.0	1.6	1.2	15.1	0.0	13.6
1100-1200	Pro	0.3	44.8	20.6	0.0	0.0	11.7	16.9	4.5	0.0	1.2
	Ocp	1.0	1.5	2.5	0.0	0.0	1.4	1.1	15.6	0.0	13.7
1200-1300	Pro	0.3	41.4	21.1	0.5	0.0	11.6	19.8	4.0	0.0	1.2
	Ocp	1.0	1.5	2.6	2.7	0.0	1.5	1.1	15.0	0.0	14.3
1300-1400	Pro	0.4	42.6	16.5	0.1	0.0	14.7	21.4	3.2	0.0	1.0
	Ocp	1.0	1.6	2.3	1.0	0.0	1.5	1.1	16.3	0.0	15.3
1400-1500	Pro	0.3	44.4	15.5	0.3	0.0	13.3	21.3	4.0	0.0	0.9
	Ocp	1.0	1.4	2.4	1.5	0.0	1.4	1.1	13.9	0.0	18.6
1500-1600	Pro	0.6	43.6	17.7	0.1	0.0	12.7	20.6	3.5	0.0	1.2
	Ocp	1.0	1.5	2.5	1.0	0.0	1.3	1.1	18.6	0.0	19.7
1600-1700	Pro	0.3	46.1	20.4	0.0	0.0	11.0	17.8	3.5	0.0	1.0
	Ocp	1.0	1.3	2.4	0.0	0.0	1.5	1.1	15.2	0.0	19.4
1700-1800	Pro	2.2	48.4	18.1	0.6	0.0	12.6	14.2	3.0	0.0	0.9
	Ocp	1.1	1.4	2.4	7.3	0.0	1.4	1.1	18.0	0.0	22.0
1800-1900	Pro	1.4	57.0	17.9	0.3	0.0	7.1	11.0	4.5	0.0	0.9
	Ocp	1.1	1.3	2.4	1.0	0.0	1.3	1.1	27.9	0.0	28.4
1900-2000	Pro	1.3	61.0	15.8	0.3	0.0	6.6	9.1	4.5	0.0	1.3
	Ocp	1.2	1.7	2.1	1.5	0.0	1.3	1.1	22.1	0.0	23.7
2000-2100	Pro	0.6	55.5	28.5	0.0	0.0	2.2	9.6	2.4	0.0	1.4
	Ocp	1.3	1.6	2.3	0.0	0.0	1.5	1.1	23.6	0.0	16.7
2100-2200	Pro	0.6	52.9	28.4	0.0	0.0	7.1	7.1	2.6	0.0	1.3
	Ocp	1.0	1.6	2.2	0.0	0.0	1.5	1.0	9.5	0.0	15.8
2200-2300	Pro	0.9	57.3	30.0	0.0	0.0	2.4	5.6	2.6	0.0	1.2
	Ocp	1.2	1.5	2.2	0.0	0.0	1.5	1.0	12.5	0.0	25.7
16 hours	Pro	0.8	48.6	19.2	0.2	0.0	10.3	15.8	3.9	0.0	1.1
	Ocp	1.1	1.5	2.4	3.5	0.0	1.4	1.1	20.0	0.0	17.6

Legend

Pro. Proportion of vehicles in % (Sum may not add up to 100% due to figure rounding)*

Ocp. Average occupancy of vehicles including both driver and passengers*

M&H Medium and Heavy

***** All traffic data are collected from combined bounds except for one way traffic